

Overview of the Memphis District U.S. Army Corps of Engineers

Col. Jeffery Anderson


Commander

Memphis District, USACE

Sept. 19, 2014



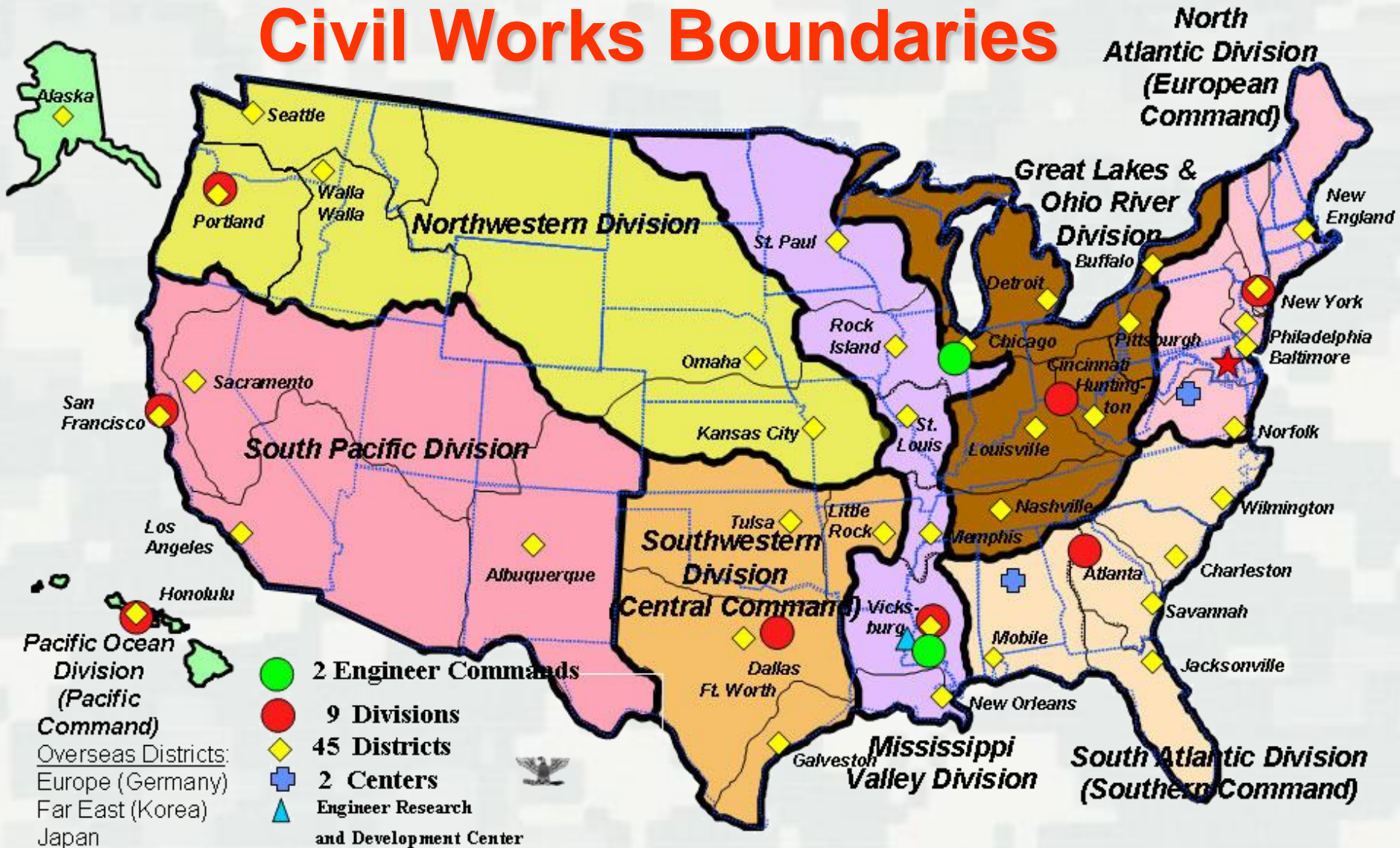
US Army Corps of Engineers
BUILDING STRONG



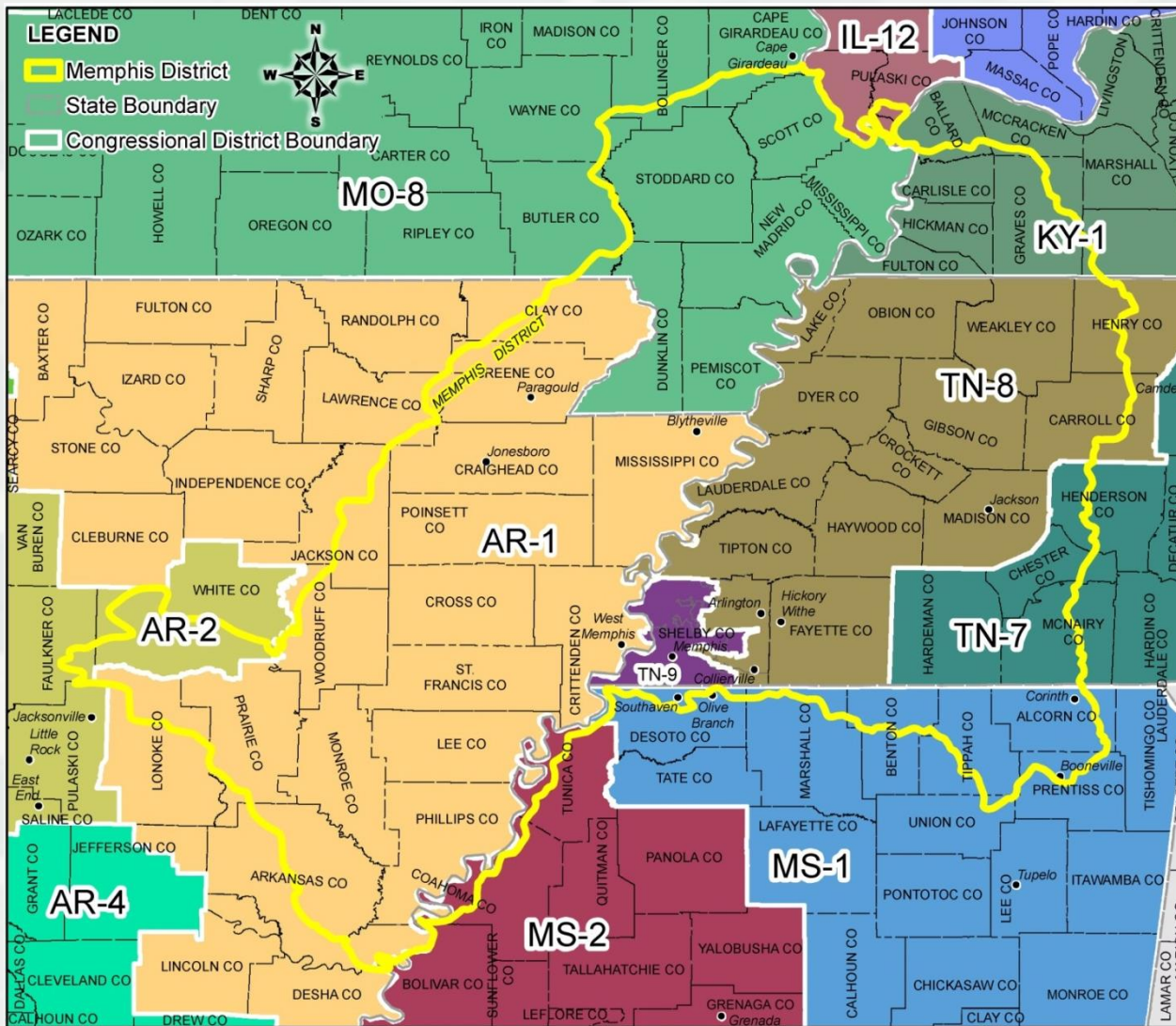
Our Mission: The Memphis District delivers flood risk management, navigation, environmental stewardship, emergency operations, other authorized civil works and work for others to benefit the region and the Nation.

Our Vision: We will be the best engineering team, working with our partners to provide innovative solutions improving the quality of life in our region today and tomorrow.

Civil Works Boundaries



Area of Responsibility



- Portions of 6 States
- 12 Senators
- 10 Congressmen
- 38 Levee/Drainage Districts
- 10 Harbors
- 400 Dikes
- 3 Major Pump Stations
- St. Francis Channel System
- 600 Miles of Navigation Channel
- 1,000+ Miles of Federal Levees



Bayou Meto Project



Bayou Meto, AR

- Pump station #1 – 100% complete.
- Electrical substation – 30% complete.
- Little Bayou Meto PS 92% complete.
- Plan to award construction contracts for Pump Station No. 1 inlet channel in FY 14.

Grand Prairie Project



Grand Prairie, AR

- Pump station substructure complete.
- Discharge pipes, segment 2 construction to be completed in February 2015.
- Pump station superstructure and discharge pipes, segment construction to be awarded September 2014.

Channel Improvement

- Clearing & snagging, bank grading began on June 30.
- Expect to sink 216,000 squares of Articulated Concrete Mattress.
- 7 of 10 harbors to be dredged in fiscal year 2014.
- Estimating 60-90 days mainstem Mississippi River dredging.



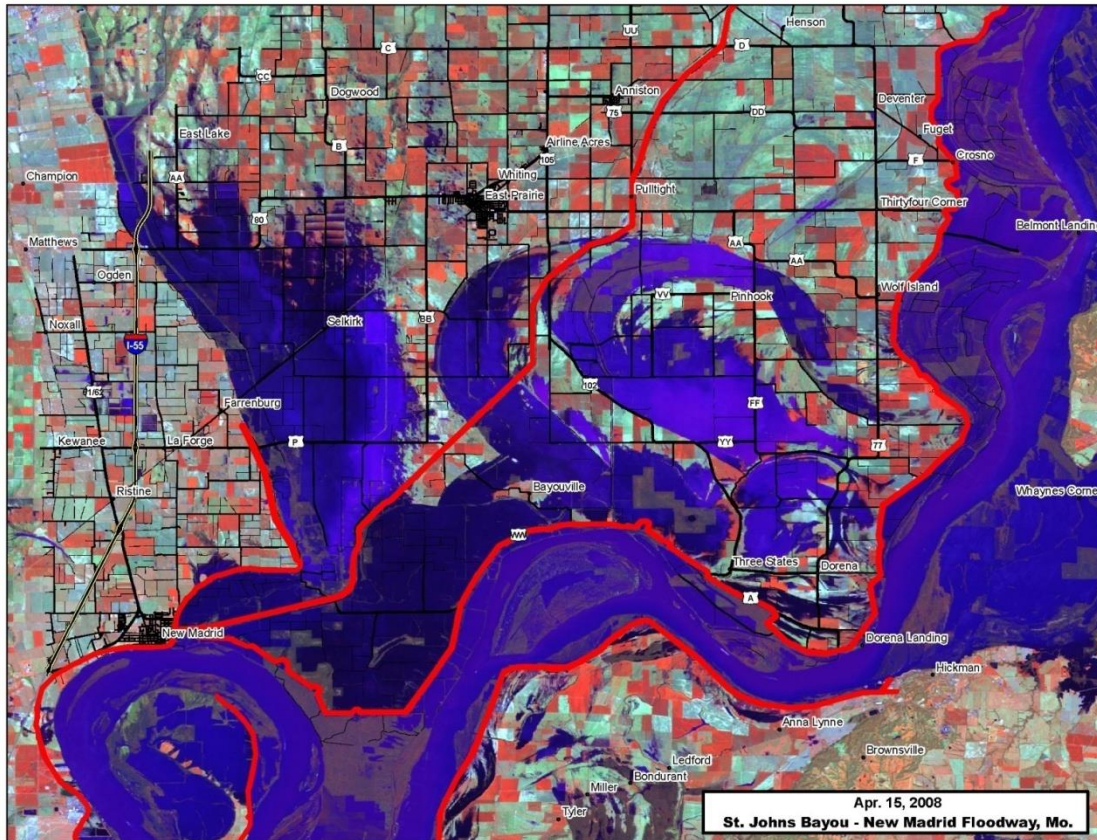
Lower Cache River



Lower Cache River, AR

- Reestablished natural flows to 2 meanders cut off in '70s.
- Construction contract work completed June 20, 2014.

St. Johns Bayou and New Madrid Floodway Project

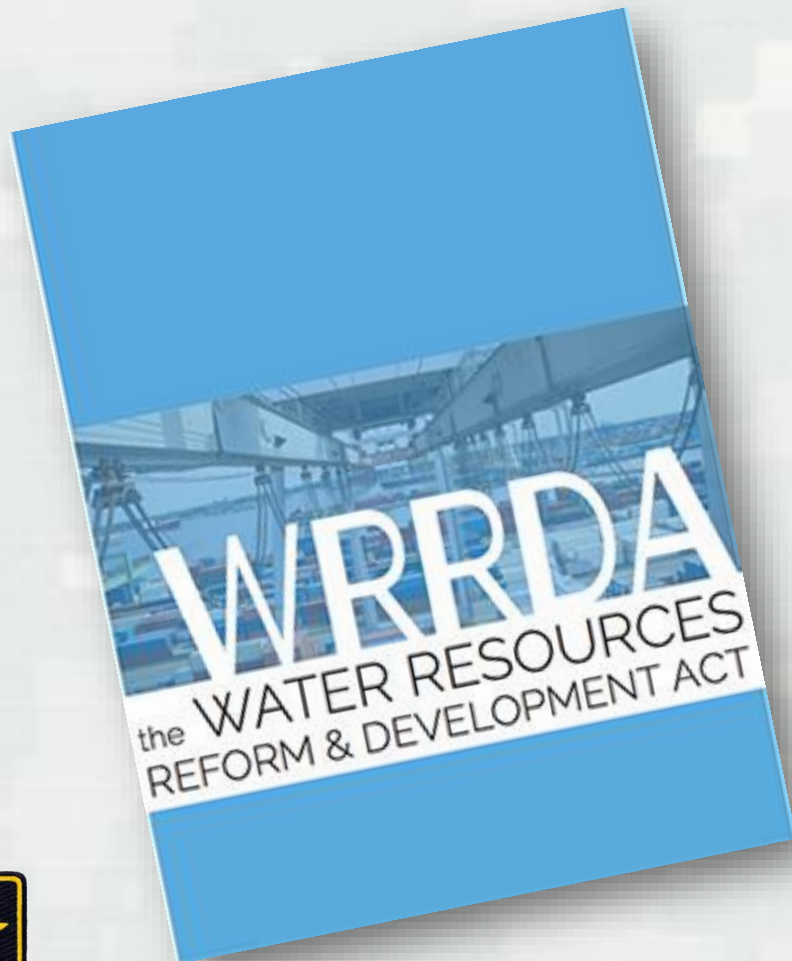


- Congressionally authorized project in SE Missouri.
- EIS being finalized.
- Seeking balance between competing socio-economic interests and environmental concerns.



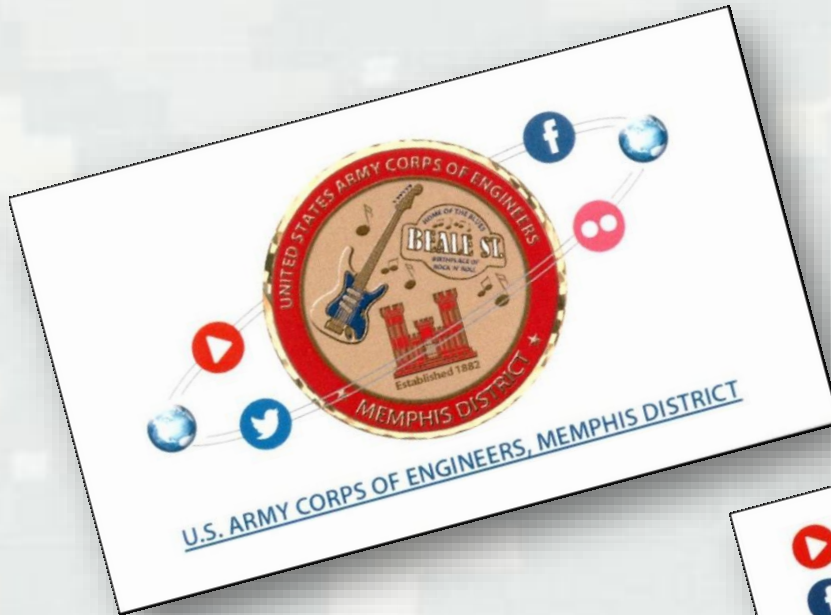
BUILDING STRONG®

National Water Resource Initiatives



BUILDING STRONG®

Stay in touch with us via *Social Media*



BUILDING STRONG®